

- Patented handle design makes every job faster and easier
- Durable GorillaGrip® handle is stronger than steel handles
- Precision cut and chamfered tip ensures full tool engagement in the screw

Color Coded

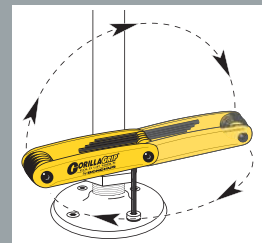
- Inch
- Metric
- TORX®
- Inch/Metric
- Motorcycle
- Utility



Patented Flutes allow for easy selection of one tool at a time.



Blades are accessed from both the top and bottom, eliminating the constant 'unstacking' of blades.



Turn & Flip Feature eliminates constant removal and repositioning in screw head when working against obstructions.



High Torque Steel:

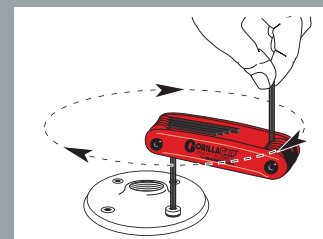
Up to 20% stronger, with more torque and twice the wear resistance of standard grades of steel.

FINISH OPTIONS:

ProGuard DRY SURFACE TECHNOLOGY DST Corrosion-resistant finish: Environmentally safe, provides better tool grip, resists solvents and is 5 times more corrosion resistant than competitor finishes.

BriteGuard FINISH Next generation chrome finish: Traditional plated tool look with superior protection and durability.

GoldGuard FINISH Real 14 karat gold finish: Superior protection and durability over traditional chrome and the look and shine of real gold.



90° stop converts the tool into a non-stop, time saving, speed wrench.



Multi Packs

PART#	MODEL#	PCS	CONTENTS	QTY
12522	HF16	16	12589 (5/64-1/4") + 12587 (2-8mm)	1
12544	HF15	15	12587 (2-8mm) + 12634 (T9-T40)	1
12533	HF24	24	12589 (5/64-1/4") + 12587 (2-8mm) + 12634 (T9-T40)	1



Hex End

Sets	PART#	MODEL#	PCS	CONTENTS	QTY
Inch	12591	HF9S	9	.050, 1/16, 5/64, 3/32, 7/64, 1/8, 9/64, 5/32, 3/16"	1
	12589	HF9	9	5/64, 3/32, 7/64, 1/8, 9/64, 5/32, 3/16, 7/32, 1/4"	1
	12585	HF5	5	3/16, 7/32, 1/4, 5/16, 3/8"	1
Metric	12592	HF7MS	7	1.5, 2, 2.5, 3, 4, 5, 6mm	1
	12587	HF7M	7	2, 2.5, 3, 4, 5, 6, 8mm	1
	12595	HF6M	6	3, 4, 5, 6, 8, 10mm	1
Inch/Metric	12550	HF12	12	5/64, 3/32, 7/64, 1/8, 9/64, 5/32" 1.5, 2, 2.5, 3, 4, 5mm	1



Ball End

Sets	PART#	MODEL#	PCS	CONTENTS	QTY
Inch	12894	BF5	5	3/16, 7/32, 1/4, 5/16, 3/8"	1
Metric	12897	BF5M	5	5, 6, 7, 8, 10mm	1



TORX® Tip

Fits all TORX® and Star screws

Sets	PART#	MODEL#	PCS	CONTENTS	QTY
TORX®	12632	TF8S	8	T6, T7, T8, T9, T10, T15, T20, T25	1
	12634	TF8	8	T9, T10, T15, T20, T25, T27, T30, T40	1



Tamper Resistant

Fits all TORX® and Star tamper resistant screws

Sets	PART#	MODEL#	PCS	CONTENTS	QTY
TORX®	12636	TR-TF7S	7	TR7, TR8, TR9, TR10, TR15, TR20, TR25	1
	12638	TR-TF8	8	TR9, TR10, TR15, TR20, TR25, TR27, TR30, TR40	1



Utility

Sets	PART#	MODEL#	PCS	CONTENTS	QTY
Utility	12540	HFU5	5	PH #1; Slotted 3/16"; Hex 4, 5, 6mm	1
	12543	RFU5	5	PH #1, #2; Slotted 3/16"; Square #1, #2	1
	12545	AFU5	5	PH #1, #2; Slotted 1/8, 3/16"; Awl	1
	12547	FU5	5	PH #1, #2; Slotted 1/8, 3/16, 1/4"	1



Hawg Buddy

Designed for making all common adjustments to Harley Davidson®† motorcycles

PART#	MODEL#	PCS	CONTENTS	QTY
12531	FUHB7	7	PH #2; TORX® T27, T40; Hex 5/32, 3/16, 1/4, 5/16"	1



Cycle Buddy

Designed for making all common adjustments to Japanese/European motorcycles

PART#	MODEL#	PCS	CONTENTS	QTY
12594	FUCB6	6	PH #2; Hex 3, 4, 5, 6, 8mm	1



Bondhus Corporation
 1400 E Broadway • PO Box 660 • Monticello, MN 55362
 Tel: 763-295-2162 • Toll Free: 800-328-8310 • Fax: 763-295-4440

TORX® and TORX PLUS® are registered trademarks of Acument Intellectual Properties, LLC.

†Harley Davidson® is a Registered Trademark of Harley Davidson Motorcycles

Bondhus, Protanium, ProGuard, BriteGuard, GoldGuard and GorillaGrip are trademarks of Bondhus Corporation.

Distributed by: